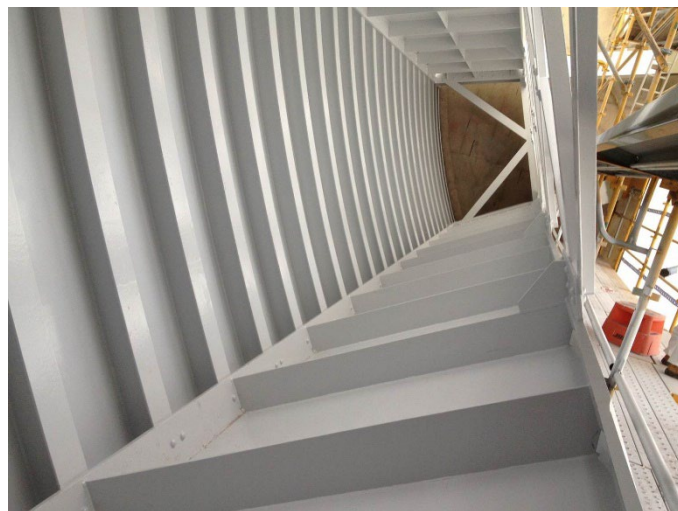


Burrendong Dam

Lake Burrendong, NSW



Spillway Gate Structure - Upstream



Downstream Structure

YEAR: 2014

SIZE (M²): 12,600m²

AREA PAINTED: Spillway gate upstream structure

PRODUCTS USED:

Primer: Epiname[®] PR250

Intermediate: Epiname[®] TL710

Topcoat: Epiname[®] TL710

PROJECT OWNER: State Water Corp

APPLICATOR: McElligott Partners

AREA PAINTED: Downstream structure

PRODUCTS USED:

Primer: Epiname[®] PR250

Topcoat: Epiname[®] DTM985

State Water Corporation performed a dam safety upgrade in 2014, which included mechanical strengthening works to gate arms, braces and replacement of lifting lugs. This involved the repaint of its 7 spill way gates.

The previous dam coatings used Watty Protective Coatings, which demonstrated its ability to protect steel structures against immersion, and mechanical wear. Watty had performed well in providing long term protection for the steel structures.

In 2014, Watty was again selected as the preferred coatings supplier due to its proven performance in asset protection.

Watty Protective Coatings - Your Trusted Partner in Coatings

Australia - 132 101 | New Zealand - 0800 735 551 | wattylpc@hempel.com | www.wattylpc.com.au

Watty Protective Coatings is part of the Hempel Group, a world leading supplier of trusted coating solutions. Hempel is a global company with strong values, working with customers in the decorative, marine, infrastructure and energy industries. Our purpose is to shape a brighter future with sustainable coating solutions, and with more than 100 years of protecting some of our customer's most valuable assets, we aim to earn their trust every day. The Hempel Group is proudly owned by the Hempel Foundation. © 2021 Hempel (Watty) Australia Pty Ltd.